

In order to ensure the smoothest possible processing of your order, we kindly ask you to take the following information as your guide.

Files

Data in **PDF format** is required for the processing of **closed data**.

For professional data creation we recommend the Adobe programs **Distiller, InDesign** and **Illustrator**.

Creating a file with Adobe programs:

- Select **PDF/X-1a : 2003** or **high-quality print** in the printout menu.
- Registration marks, control strips, etc. are not required.

Open data can only be processed after consultation. We prefer the file formats **.ai** (illustrator) or **.indd** (InDesign). To avoid a lack of fonts, pictures, etc. your files should be packed.

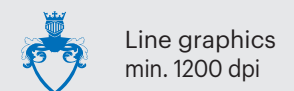
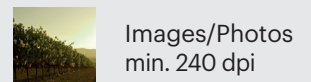
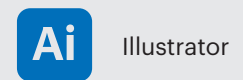
Your data should be created according to the **FOGRA 39 ISOcoated V2** print standard. Images require a minimum resolution of **240 dpi** (better 300 dpi) and should correspond to the CMYK color space. Line graphics even require a resolution min. **1200 dpi**.

Size, digging and trapping

Please create your print data in the final size.

Self adhesive / roll adhesive labels (rectangular or individual shape)

- Create dieline (0.2mm line thickness) named special colour "**Diecut**" and set it on **overprint**.
- The corner radius of the dieline should always be **min. 0.5mm**. Of course, a larger corner radius is possible too.
- Die-cutting is only possible around the label. Stamping (inside the label) is only conditional and possible after consultation.
- Create a trim of **2.5mm**.
- Cutting marks are **not** required.



Corner radius min. 0.5 mm

Create trim of 2.5 mm



Dieline 0.2 mm > create as a special colour **Diecut**

Colours

Create your print data in either **CMYK** or **special colours**.

If special colours are required, we can only process them if you explicitly set them as a special colour in your data. Please refer to the original PANTONE® or HKS® designation when specifying your spot colours.

Delivery of RGB data! If you provide us with RGB data, we will convert it into the CMYK color space without consulting you. This conversion may result in colour shifts, for which we cannot assume any liability!

Creation of finishings

- The type of finishing (hot foil, blind embossing, relief varnish, etc.) must be defined as a **special colour**. Like the dieline, finishing must also be placed on **overprint**.
- Hotfoil embossing and varnishes are only possible on the whole plane surface or as a solid tone. A gradation or shades are technically impossible.

Creation of opaque white

- Opaque white must be defined as a **special color** "Opaque White" and must be set on **overprint**.

Line thickness

Application	Positive	Negative
Offset printing	0.09 mm	0.09 mm
Screen printing	0.12 mm	0.20 mm
UV Flexo printing*	0.05 mm	0.09 mm
Digital printing	0.05 mm	0.08 mm
High build varnish	0.50 mm	0.60 mm
Embossing**	0.20 mm	0.20 mm

*Negative print with high colour volume
 **Motive-dependent deviation possible

Do you have any questions?
 Our prepress will be happy to help you.

☎ +49 6507 9259 0

✉ trittenheim-info@cclind.com

Finishing
 e.g. **high build varnish**, apply as a special colour "Screeny High Build Gloss" and place on **overprint**.



Lorem

Embossing
 minimum line thickness 0.2 mm

Lorem

Screen printing (positive)
 minimum line thickness 0.12 mm

Lorem

Screen printing (negative)
 minimum line thickness 0.2 mm